



the landing
at wildflower station







the landing

at wildflower station

Located in Antioch, California, our Wildflower Station community offers 2 distinct neighborhoods. The Pointe has 22 completed single-family homes located on a private court, and The Landing has 98 stylish flats. With panoramic views of Mt. Diablo, just a short drive to Antioch BART, the Dunes National Wildlife Refuge, the San Joaquin River Delta, The Crossing Shopping Center, and more – you'll never run out of things to do!

The Landing will have a spacious community center and fitness center. These 98 stylish flats are beautifully designed with fresh, clean, modern lines and functionality for today's families. Ranging in size from 674 to 1,149 sq.ft. with 1-3 bedrooms, up to 2 baths, and include all the amenities you would expect from DeNova Homes.

With easy access to highways, public transportation, nearby attractions, and a beautiful community, it's easy to see why The Landing at Wildflower Station is so appealing!





ELEVATION A



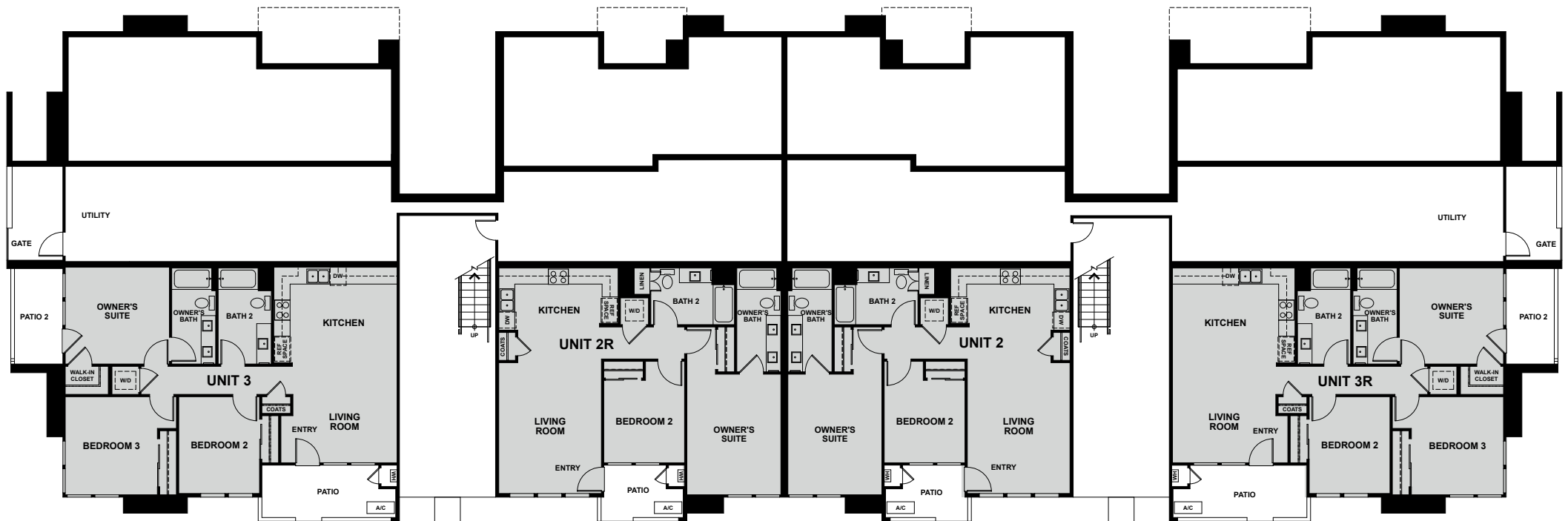


ELEVATION B





24 Plex Ground Floor West



Plan 3 - 1,149 sq. ft.
3 Bedrooms | 2 Baths

Plan 2R - 1,004 sq. ft.
2 Bedrooms | 2 Baths

Plan 2 - 1,004 sq. ft.
2 Bedrooms | 2 Baths

Plan 3R - 1,149 sq. ft.
3 Bedrooms | 2 Baths



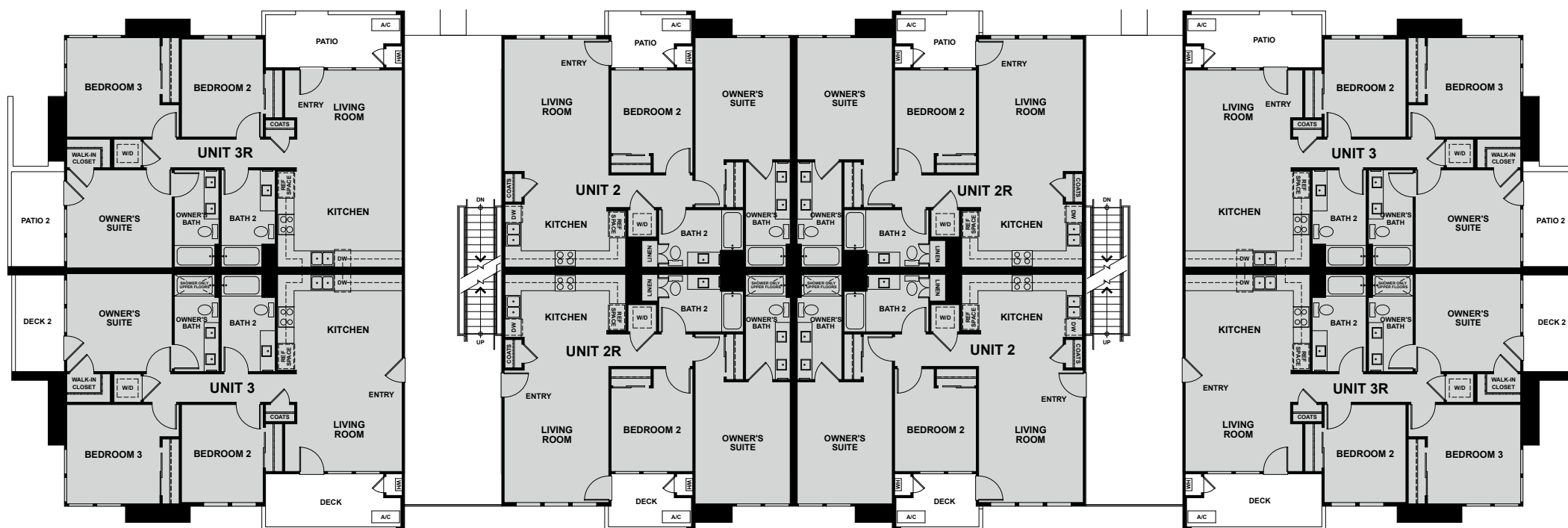
24 Plex
Ground Floor East
Second Floor West

Plan 3R - 1,149 sq. ft.
3 Bedrooms | 2 Baths

Plan 2 - 1,004 sq. ft.
2 Bedrooms | 2 Baths

Plan 2R - 1,004 sq. ft.
2 Bedrooms | 2 Baths

Plan 3 - 1,149 sq. ft.
3 Bedrooms | 2 Baths



Plan 3 - 1,149 sq. ft.
3 Bedrooms | 2 Baths

Plan 2R - 1,004 sq. ft.
2 Bedrooms | 2 Baths

Plan 2 - 1,004 sq. ft.
2 Bedrooms | 2 Baths

Plan 3R - 1,149 sq. ft.
3 Bedrooms | 2 Baths



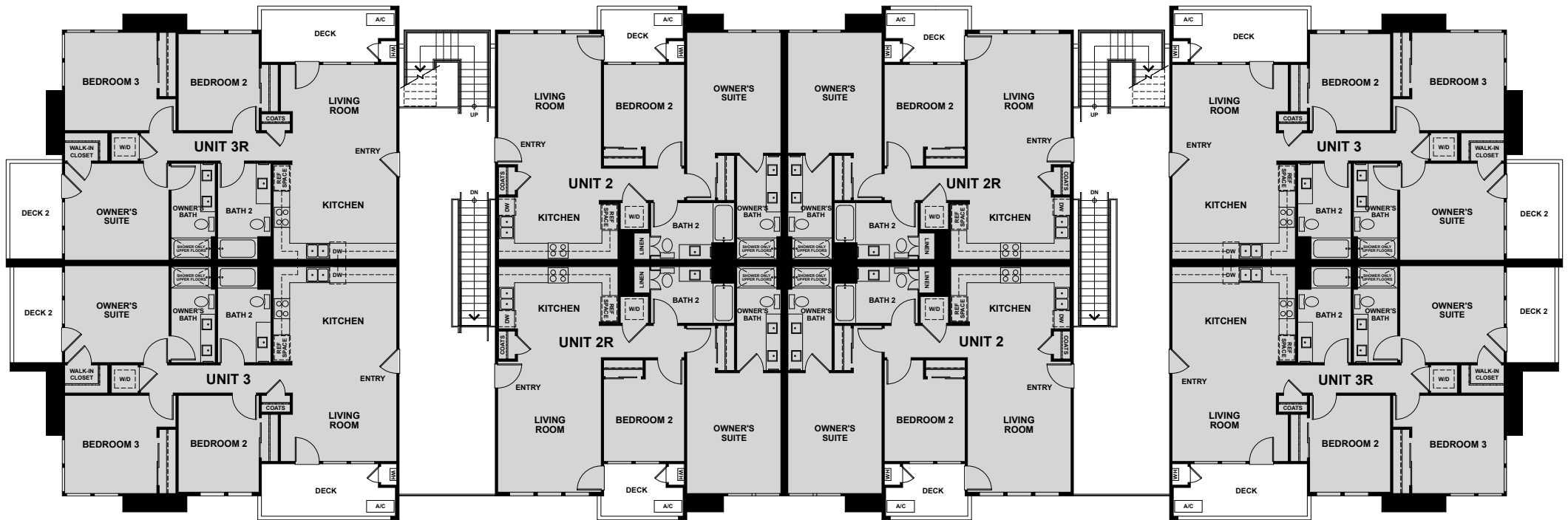
24 Plex
Second Floor East
Third Floor West

Plan 3R - 1,149 sq. ft.
3 Bedrooms | 2 Baths

Plan 2 - 1,004 sq. ft.
2 Bedrooms | 2 Baths

Plan 2R - 1,004 sq. ft.
2 Bedrooms | 2 Baths

Plan 3 - 1,149 sq. ft.
3 Bedrooms | 2 Baths



Plan 3 - 1,149 sq. ft.
3 Bedrooms | 2 Baths

Plan 2R - 1,004 sq. ft.
2 Bedrooms | 2 Baths

Plan 2 - 1,004 sq. ft.
2 Bedrooms | 2 Baths

Plan 3R - 1,149 sq. ft.
3 Bedrooms | 2 Baths



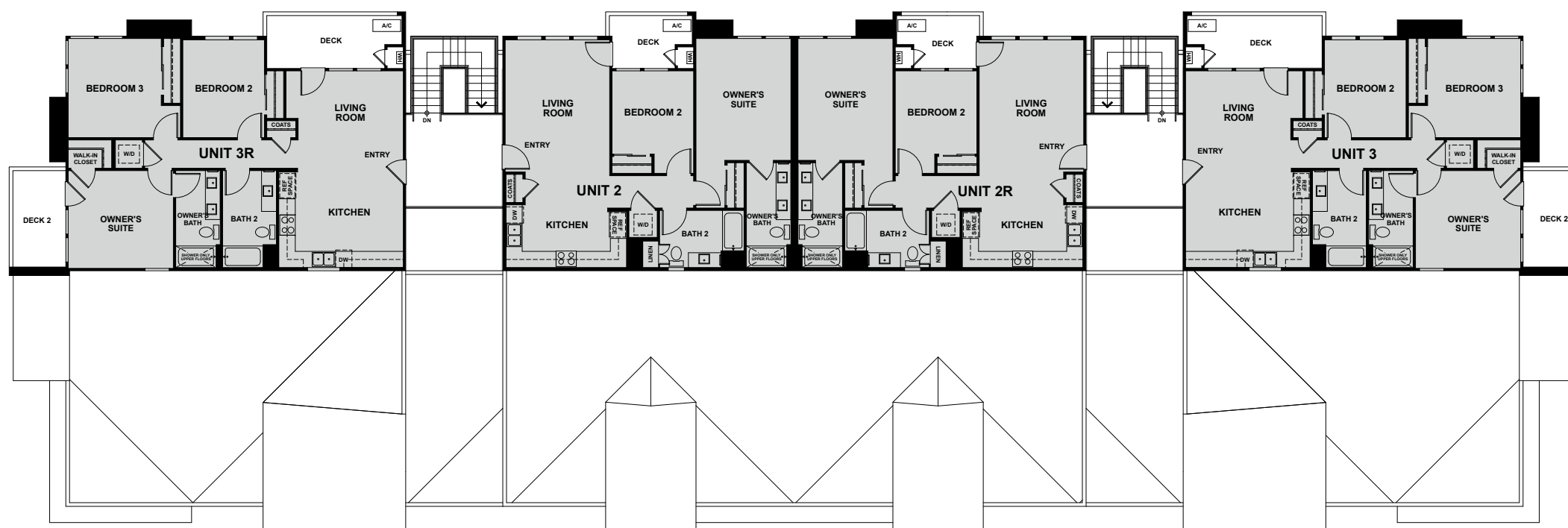
24 Plex
Third Floor East
Roof Line

Plan 3R - 1,149 sq. ft.
3 Bedrooms | 2 Baths

Plan 2 - 1,004 sq. ft.
2 Bedrooms | 2 Baths

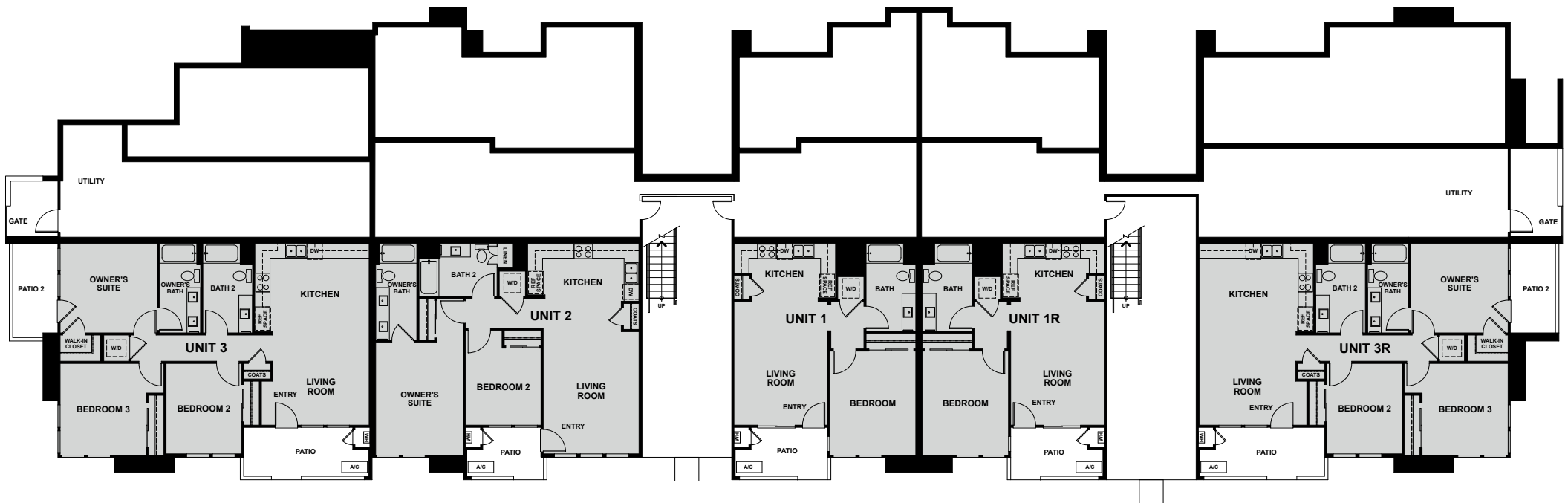
Plan 2R - 1,004 sq. ft.
2 Bedrooms | 2 Baths

Plan 3 - 1,149 sq. ft.
3 Bedrooms | 2 Baths





25 Plex Ground Floor West



Plan 3 - 1,149 sq. ft.
3 Bedrooms | 2 Baths

Plan 2R - 1,004 sq. ft.
2 Bedrooms | 2 Baths

Plan 1 - 674 sq. ft.
1 Bedroom | 1 Bath

Plan 1R - 674 sq. ft.
1 Bedroom | 1 Bath

Plan 3R - 1,149 sq. ft.
3 Bedrooms | 2 Baths



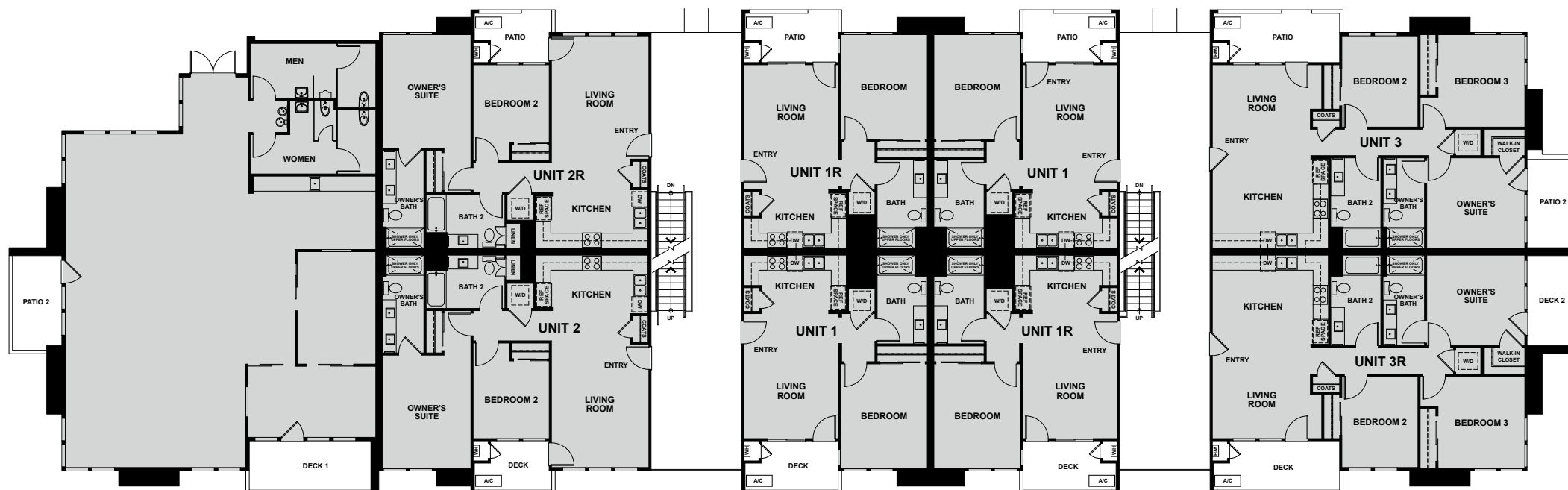
25 Plex
Ground Floor East
Second Floor West

Plan 2R - 1,004 sq. ft.
2 Bedrooms | 2 Baths

Plan 1R - 674 sq. ft.
1 Bedroom | 1 Bath

Plan 1 - 674 sq. ft.
1 Bedroom | 1 Bath

Plan 3 - 1,149 sq. ft.
3 Bedrooms | 2 Baths



Community Center

Plan 2 - 1,004 sq. ft.
2 Bedrooms | 2 Baths

Plan 1 - 674 sq. ft.
1 Bedroom | 1 Bath

Plan 1R - 674 sq. ft.
1 Bedroom | 1 Bath

Plan 3R - 1,149 sq. ft.
3 Bedrooms | 2 Baths



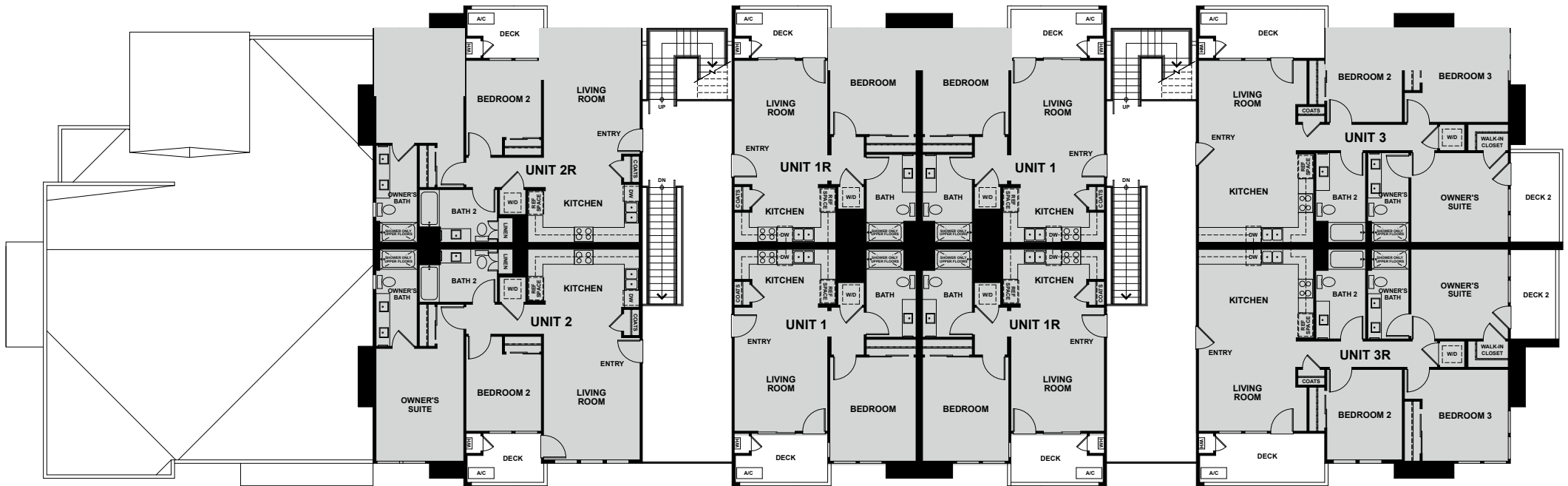
25 Plex
Second Floor East
Third Floor West

Plan 2R - 1,004 sq. ft.
2 Bedrooms | 2 Baths

Plan 1R - 674 sq. ft.
1 Bedroom | 1 Bath

Plan 1 - 674 sq. ft.
1 Bedroom | 1 Bath

Plan 3 - 1,149 sq. ft.
3 Bedrooms | 2 Baths



Plan 2 - 1,004 sq. ft.
2 Bedrooms | 2 Baths

Plan 1 - 674 sq. ft.
1 Bedroom | 1 Bath

Plan 1R - 674 sq. ft.
1 Bedroom | 1 Bath

Plan 3R - 1,149 sq. ft.
3 Bedrooms | 2 Baths



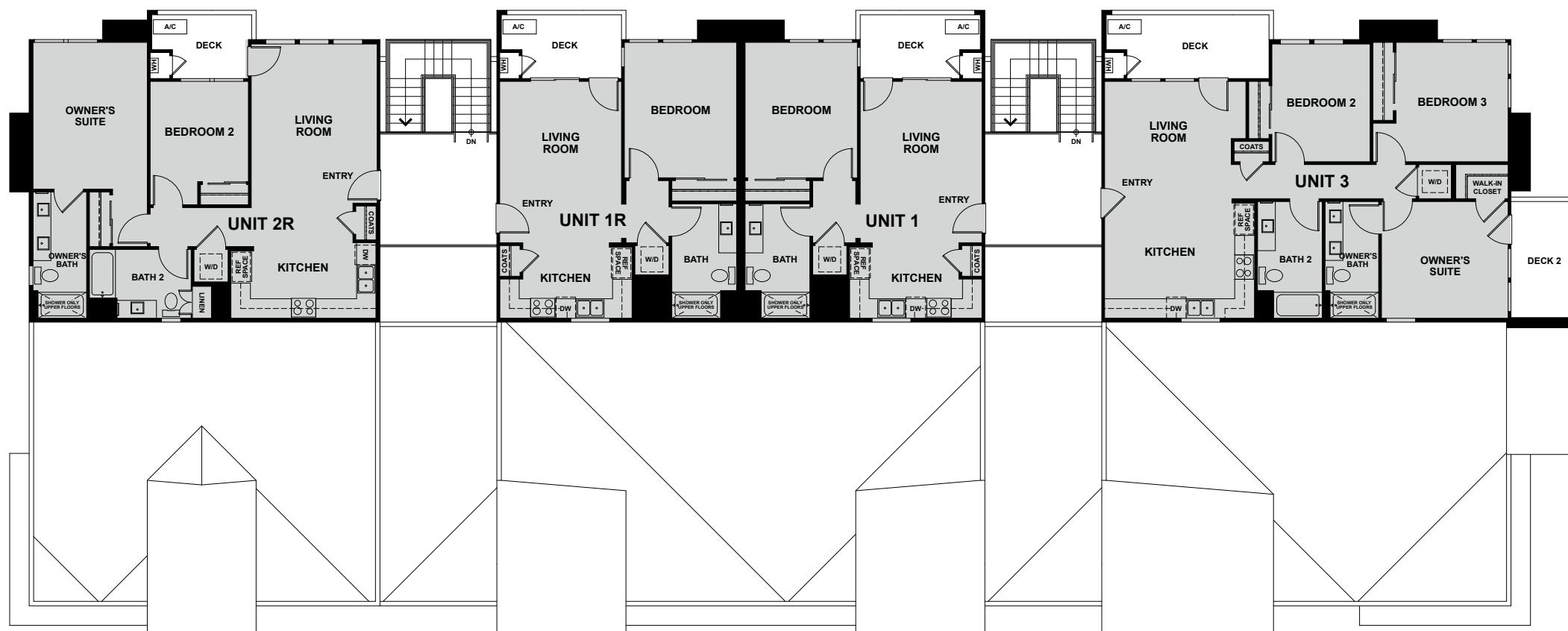
25 Plex
Third Floor East
Roof Line

Plan 2R - 1,004 sq. ft.
2 Bedrooms | 2 Baths

Plan 1R - 674 sq. ft.
1 Bedroom | 1 Bath

Plan 1 - 674 sq. ft.
1 Bedroom | 1 Bath

Plan 3 - 1,149 sq. ft.
3 Bedrooms | 2 Baths





Residence 1

Approx. 674 sq. ft.

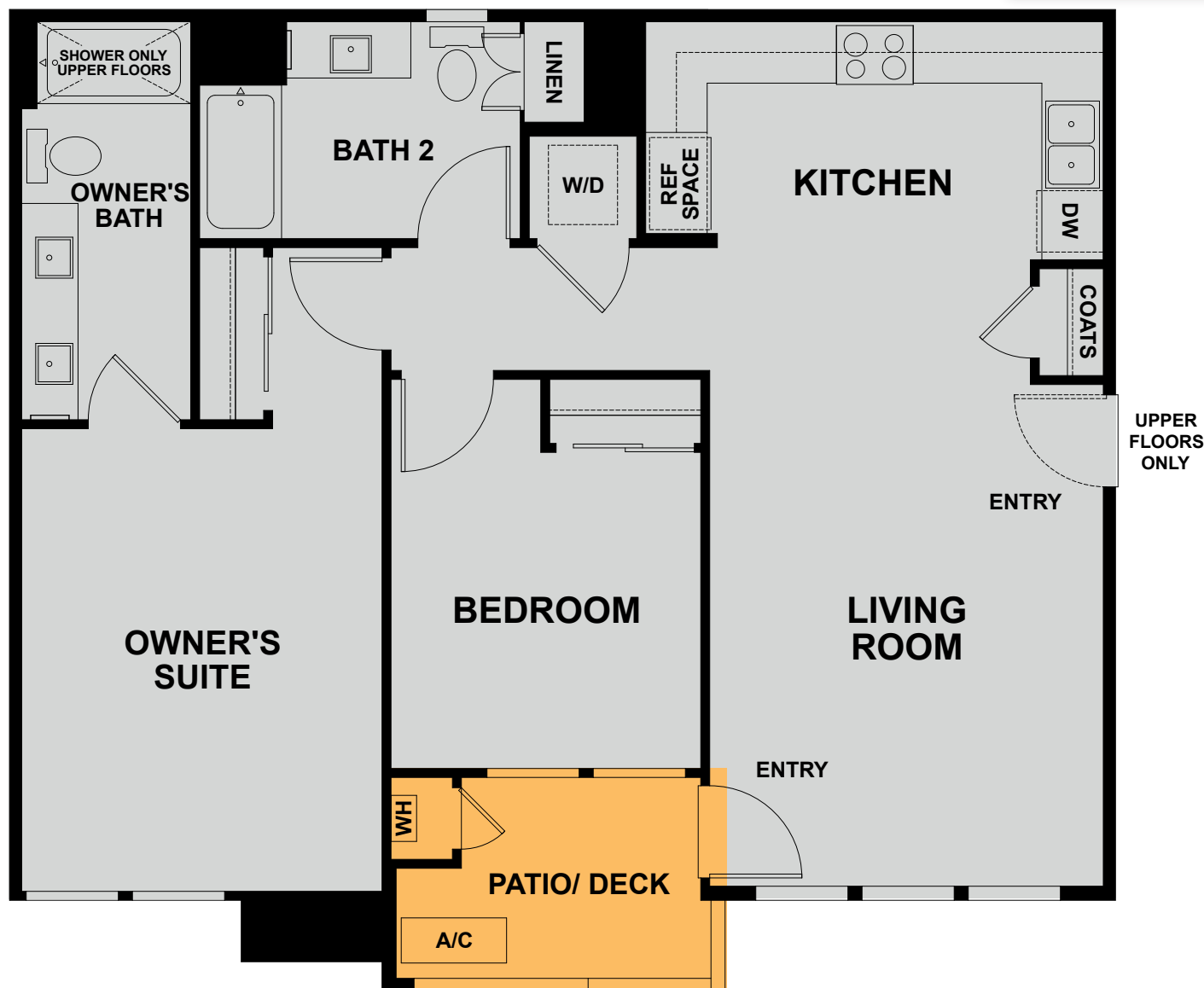
1 Bedroom | 1 Bath





Residence 2

Approx. 1,004 sq. ft.
2 Bedrooms | 2 Baths





Residence 3

Approx. 1,149 sq. ft.
3 Bedrooms | 2 Baths

WINDOW AND NO
CABINETS ON THIRD
FLOOR/ROOF LINE
ABOVE SINK





Included Features

EXTERIOR FEATURES

- Urban Modern exterior elevation
- Community Center and Fitness Center
- Designer-selected exterior color scheme for enhanced community appearance
- 6 Panel Therma Tru steel entry door with KwikSet® satin nickel hardware on 2nd and 3rd floors only
- Therma Tru single lite clear glass steel entry door with built-in blinds and KwikSet® satin nickel hardware on ground floor only

DRAMATIC INTERIORS

- Open-concept living spaces ideal for entertaining
- Thermofoil Shaker cabinet doors in three color choices with brushed nickel bar pulls
- Luxury vinyl plank flooring at entry, kitchen and living room
- Hand laid 13" x 13" ceramic tile flooring at all bathrooms and laundry
- Designer-selected carpet in all other rooms
- Two-panel interior doors with Schlage® lever chrome hardware

DESIGNER KITCHENS

- Stainless LG® appliances package with 30" gas range with micro hood, and 24" dishwasher
- Stainless LG® counter depth side-by-side refrigerator
- Slab granite countertops with 6" backsplash with full height at cooktop in two color choices
- Delta® Foundations single handle pull down chrome faucet
- Stainless steel AmeriSink® single basin

OWNER'S SUITE

- Owner's Suite (per plan) with private bath
- Dual vanities (per plan) with Estone countertop and 4" backsplash
- Polished chrome hardware and bath accessories
- Shower/bathtub combo with fiberglass surround and shower rod (Plan 1)
- Spacious shower with fiberglass surround and glass and chrome enclosure (Plans 2 and 3)
- Square cut vanity mirrors

QUALITY FEATURES

- LG® Stacked Washer and Gas Dryer
- Polished chrome plumbing fixtures and accessories in all Baths
- Designer-selected polished chrome lighting in all Baths
- Elongated toilets in all Baths
- Smart thermostats
- Universal data outlet with Cat 6 data wiring in the Kitchen
- Dual Jack Cat 6 Data and RG6 cable wiring in Bedrooms and Living Room
- Flat Screen TV Pre-wire in Living Room
- Interior fire sprinkler system
- Smoke detectors with carbon monoxide alarm

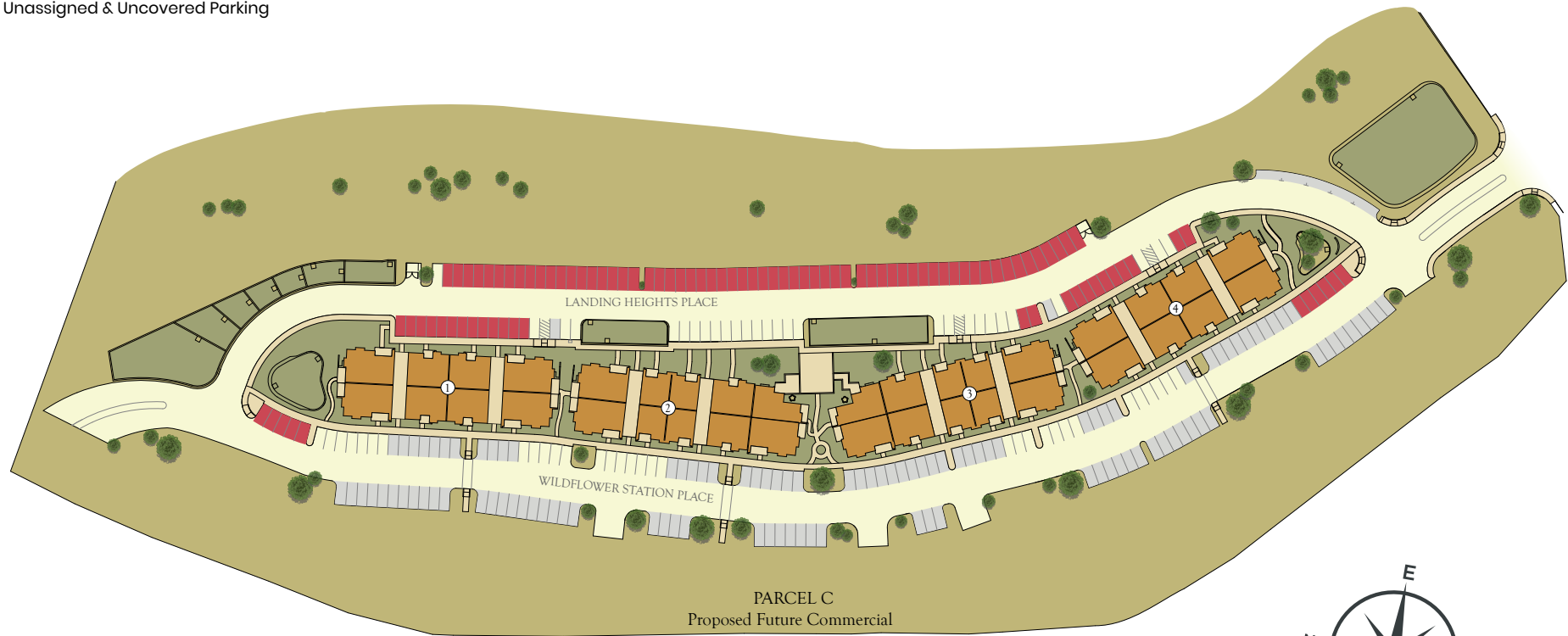
GREEN LIVING

- LED recessed lights
- Energy-efficient tankless water heater
- Low flow bathroom faucets
- Low-E windows, dual-glazed
- Interior low VOC flat paint



Site Map

- Assigned & Covered Parking
- Assigned & Uncovered Parking
- Unassigned & Uncovered Parking





Building a Better Community®

For over 30 years, DeNova Homes has earned a reputation as one of the most respected homebuilders in California. Our approach is simple—as a private, family-owned builder, we address each community individually, incorporate the unique characteristics of the surrounding area and commit to build only the very best. These guiding principles have been recognized numerous times by the Building Industry Association through various awards, including the prestigious Builder of the Year award. Perhaps most rewarding of all though are the hundreds of satisfied homeowners who have confirmed DeNova Homes' standard of quality, lifestyle, and value.

While we focus on innovative design and superior craftsmanship, our primary commitment is to the lifestyle our homeowners enjoy when they move into a DeNova home. Building a community is what we do, whether it is creating the ultimate environment for your dream lifestyle, building affordable housing for families and individuals at risk for homelessness with Yellow Roof Foundation, or supporting the American Red Cross, Volunteers of America, the American Cancer Society, and many other local organizations. DeNova Homes is there for the neighborhoods in which we build. It is our defining goal. It is what makes us proud. It's what creates *Home*.



the landing

at wildflower station



THE LANDING AT WILDFLOWER STATION

2500 Wildflower Station Place • Antioch • CA • 94531
(925) 269-7407 • TheLanding@DeNovaHomes.com • DeNovaHomes.com

