

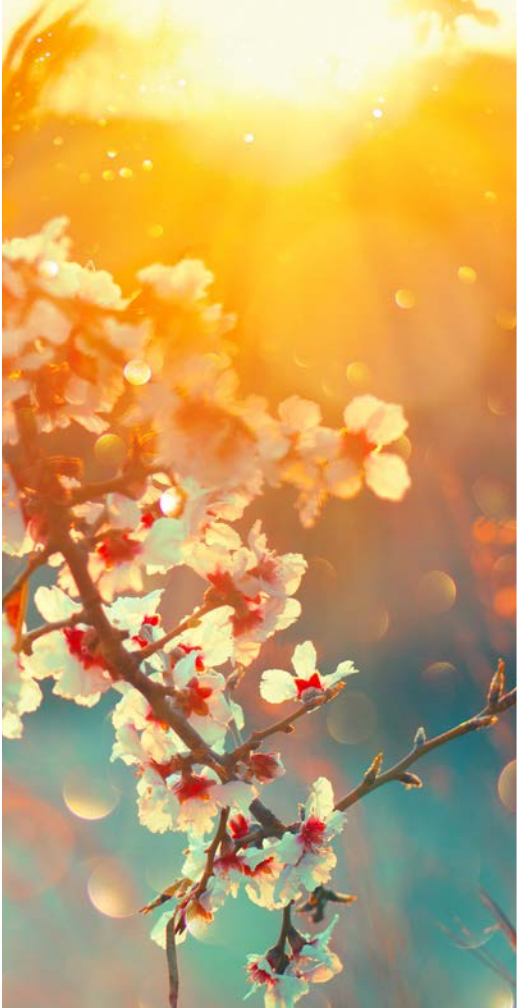
BLOOMING WITH POSSIBILITIES



**PRELIMINARY**











Flourish, it's a beautiful day. Get up and connect with family, friends and neighbors. Breathe in the fresh air that surrounds you—fragrant almond blossoms, freshly cut grass and a hint of citrus/ocean mist. This is a place you can put down roots. A place that bountifully provides fruitful treasures in every direction—this is Allendale. A thoughtfully planned community featuring something for everyone, located in the quaint and charming town of Hollister.

Stunning views of the surrounding hills are just the beginning—The Knolls at Allendale is a true escape. Beautiful yards and flexible floorplans featuring both single and two-story designs with 1,928 to 2,731 square feet make these homes some of the grandest in the region. Showcasing an impressive array of amenities and high-quality finishes makes a Knolls home the perfect choice.

Whether you are looking for a first home, you need more space for a growing family or you are ready to simplify your life now that the kids are grown, Allendale has the perfect home for you. Allendale's ideal location allows you to fill your days with adventure. From national parks to state parks to historic parks, plus easy access to beaches and local wineries, you'll find it all just a short distance from home. Experience the way nature and lifestyle come together to establish the foundation for an entire community to thrive.

**ALLENDALE — BLOOMING WITH POSSIBILITIES**



## RESIDENCE 1

1,928 sq. ft.  
3 Beds | 2.5 Baths  
2-Car Garage

### OPTIONS

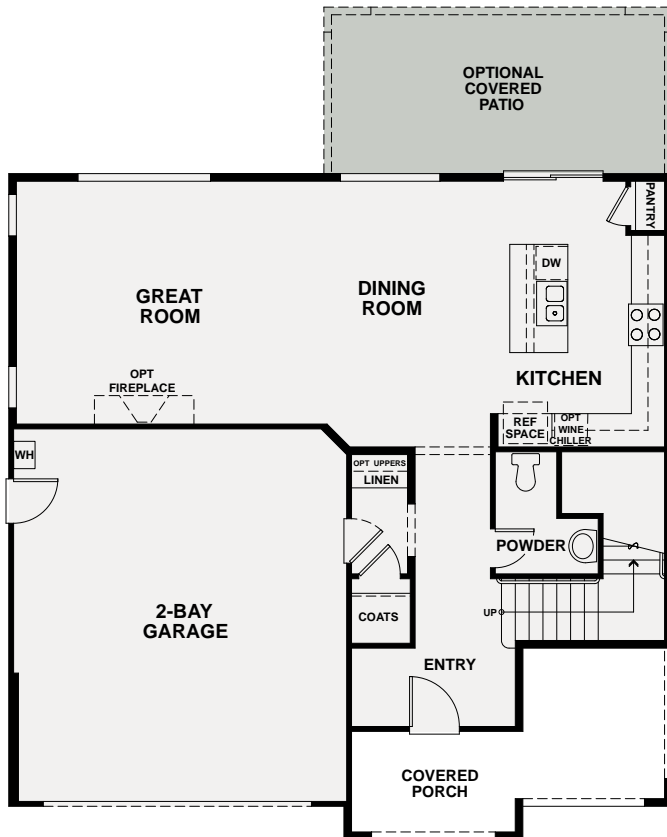
Covered Patio



RENDERINGS AND FLOOR PLANS ARE ARTIST'S CONCEPTUAL DRAWINGS. SQUARE FOOTAGE AND ROOM DIMENSIONS ARE APPROXIMATE. WINDOW SIZES, SHAPES AND LOCATIONS VARY PER ELEVATION. DUE TO OUR ONGOING COMMITMENT TO QUALITY, FEATURES, FINISHES, FLOOR PLANS, INFORMATION, AND SPECIFICATIONS ARE SUBJECT TO CHANGE WITHOUT NOTICE.



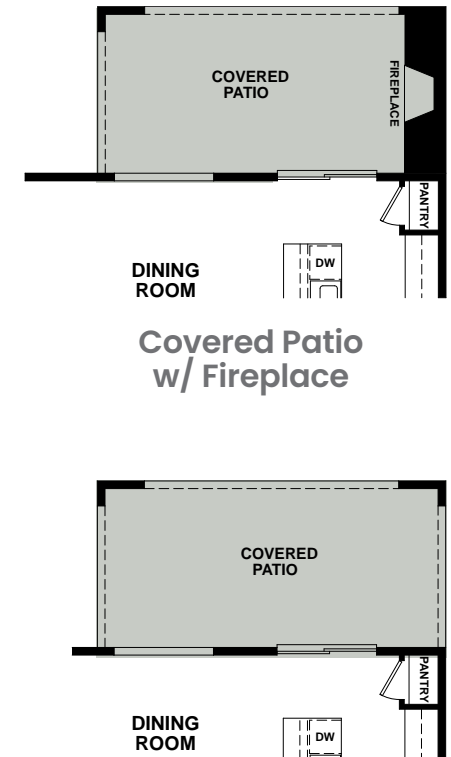
# RESIDENCE 1



FIRST FLOOR



SECOND FLOOR



Covered Patio

OPTIONS





## RESIDENCE 2

2,036 sq. ft.  
3 Beds | 2 Baths  
2-Car Garage

### OPTIONS

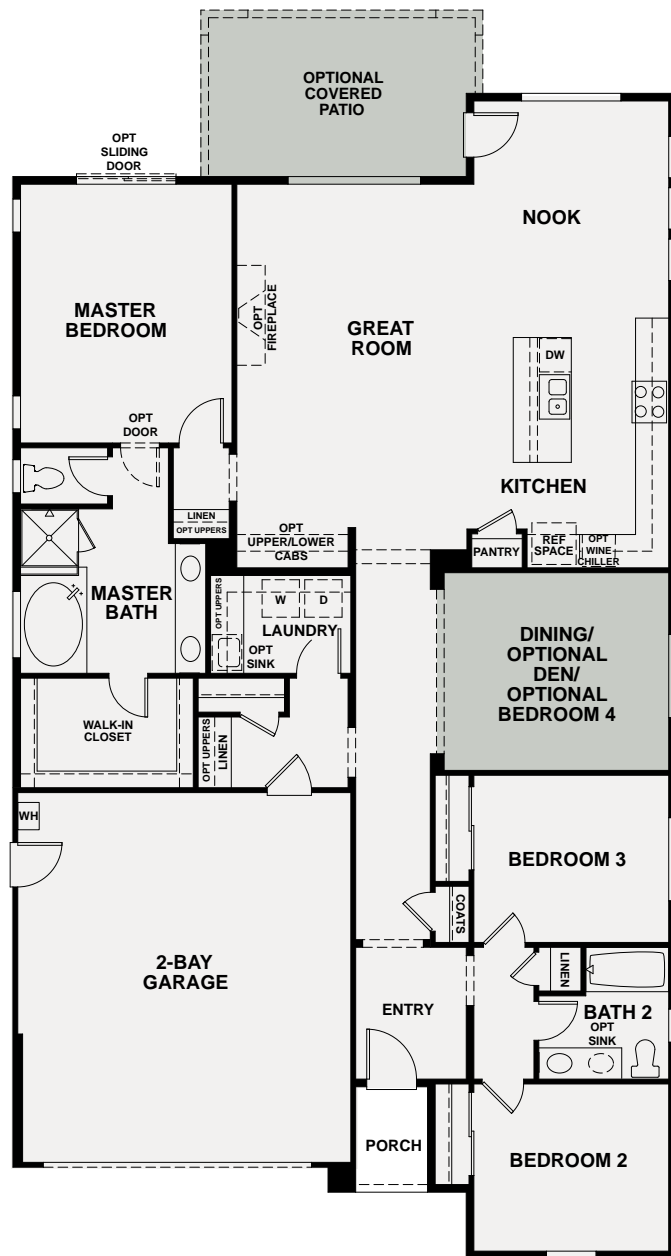
Covered Patio  
Den or Bedroom 4  
in Lieu of Dining



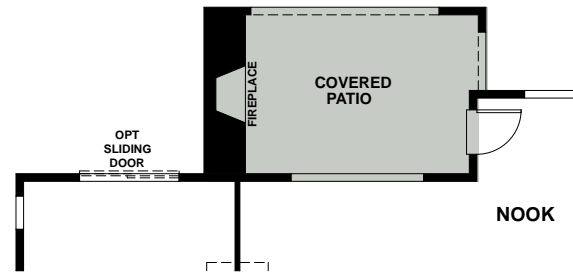
RENDERINGS AND FLOOR PLANS ARE ARTIST'S CONCEPTUAL DRAWINGS. SQUARE FOOTAGE AND ROOM DIMENSIONS ARE APPROXIMATE. WINDOW SIZES, SHAPES AND LOCATIONS VARY PER ELEVATION. DUE TO OUR ONGOING COMMITMENT TO QUALITY, FEATURES, FINISHES, FLOOR PLANS, INFORMATION, AND SPECIFICATIONS ARE SUBJECT TO CHANGE WITHOUT NOTICE.



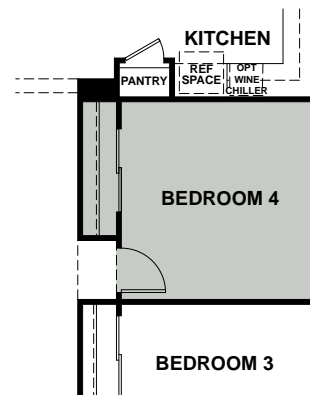
## RESIDENCE 2



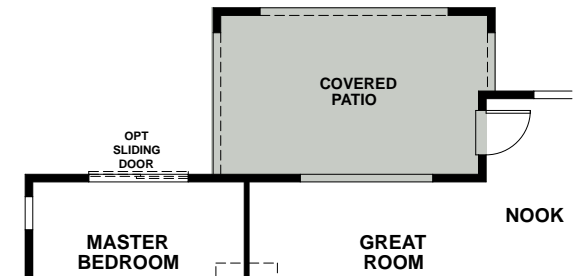
FIRST FLOOR



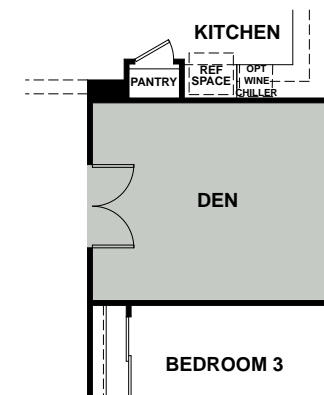
Covered Patio  
w/ Fireplace



Bedroom 4  
in Lieu of Dining



Covered Patio



Den  
in Lieu of Dining

OPTIONS

RENDERINGS AND FLOOR PLANS ARE ARTIST'S CONCEPTUAL DRAWINGS. SQUARE FOOTAGE AND ROOM DIMENSIONS ARE APPROXIMATE. WINDOW SIZES, SHAPES AND LOCATIONS VARY PER ELEVATION. DUE TO OUR ONGOING COMMITMENT TO QUALITY, FEATURES, FINISHES, FLOOR PLANS, INFORMATION, AND SPECIFICATIONS ARE SUBJECT TO CHANGE WITHOUT NOTICE.





## RESIDENCE 3

2,378 sq. ft.  
4 Beds | 3 Baths  
2-Car Garage



RENDERINGS AND FLOOR PLANS ARE ARTIST'S CONCEPTUAL DRAWINGS. SQUARE FOOTAGE AND ROOM DIMENSIONS ARE APPROXIMATE. WINDOW SIZES, SHAPES AND LOCATIONS VARY PER ELEVATION. DUE TO OUR ONGOING COMMITMENT TO QUALITY, FEATURES, FINISHES, FLOOR PLANS, INFORMATION, AND SPECIFICATIONS ARE SUBJECT TO CHANGE WITHOUT NOTICE.

## RESIDENCE 3



## FIRST FLOOR

RENDERINGS AND FLOOR PLANS ARE ARTIST'S CONCEPTUAL DRAWINGS. SQUARE FOOTAGE AND ROOM DIMENSIONS ARE APPROXIMATE. WINDOW SIZES, SHAPES AND LOCATIONS VARY PER ELEVATION. DUE TO OUR ONGOING COMMITMENT TO QUALITY, FEATURES, FINISHES, FLOOR PLANS, INFORMATION, AND SPECIFICATIONS ARE SUBJECT TO CHANGE WITHOUT NOTICE.





## RESIDENCE 4

2,473 sq. ft.  
4 Beds | 3 Baths  
2-Car Garage

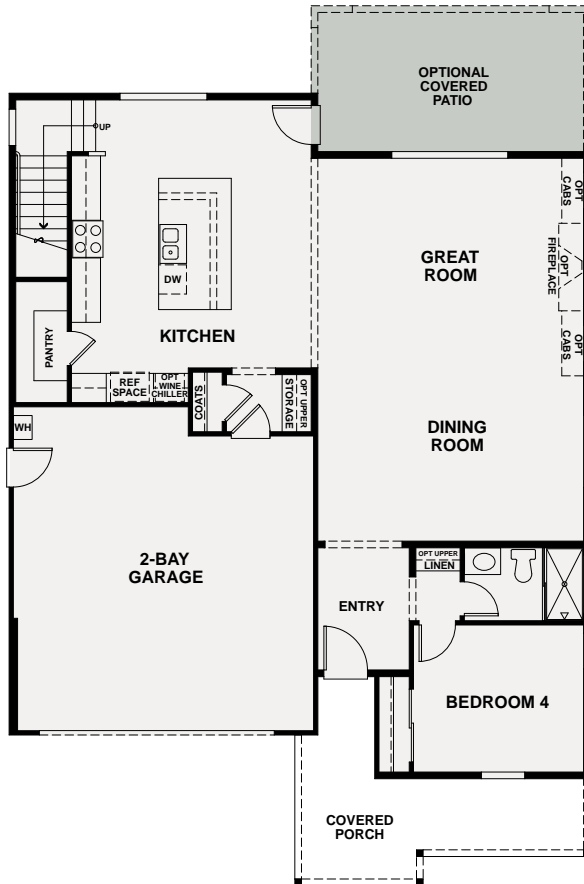
### OPTIONS

Covered Patio  
Bedroom 5  
in Lieu of Loft



RENDERINGS AND FLOOR PLANS ARE ARTIST'S CONCEPTUAL DRAWINGS. SQUARE FOOTAGE AND ROOM DIMENSIONS ARE APPROXIMATE. WINDOW SIZES, SHAPES AND LOCATIONS VARY PER ELEVATION. DUE TO OUR ONGOING COMMITMENT TO QUALITY, FEATURES, FINISHES, FLOOR PLANS, INFORMATION, AND SPECIFICATIONS ARE SUBJECT TO CHANGE WITHOUT NOTICE.

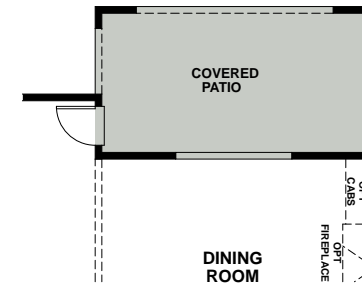
# RESIDENCE 4



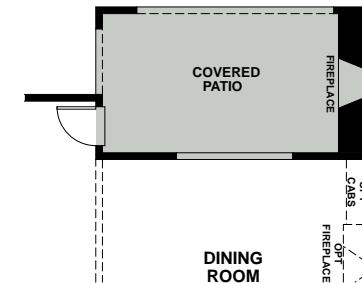
FIRST FLOOR



SECOND FLOOR



Covered Patio



Covered Patio w/ Fireplace



Bedroom 5 in Lieu of Loft

OPTIONS

RENDERINGS AND FLOOR PLANS ARE ARTIST'S CONCEPTUAL DRAWINGS. SQUARE FOOTAGE AND ROOM DIMENSIONS ARE APPROXIMATE. WINDOW SIZES, SHAPES AND LOCATIONS VARY PER ELEVATION. DUE TO OUR ONGOING COMMITMENT TO QUALITY, FEATURES, FINISHES, FLOOR PLANS, INFORMATION, AND SPECIFICATIONS ARE SUBJECT TO CHANGE WITHOUT NOTICE.





## RESIDENCE 5

2,731 sq. ft.  
4 Beds | 3.5 Baths  
2-Car Garage

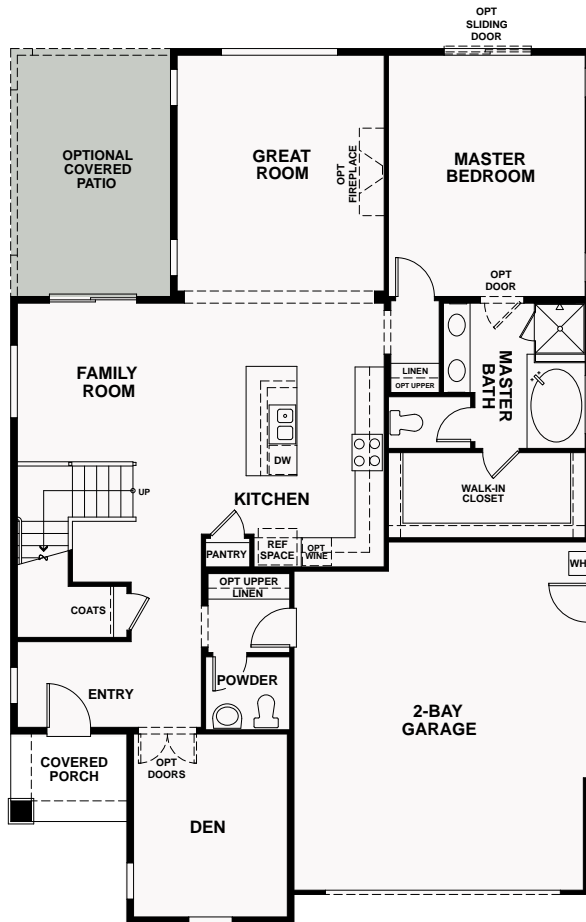
### OPTIONS

Covered Patio

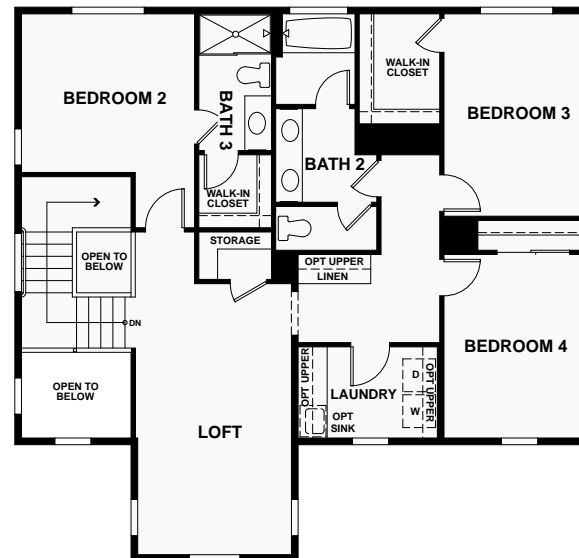


RENDERINGS AND FLOOR PLANS ARE ARTIST'S CONCEPTUAL DRAWINGS. SQUARE FOOTAGE AND ROOM DIMENSIONS ARE APPROXIMATE. WINDOW SIZES, SHAPES AND LOCATIONS VARY PER ELEVATION. DUE TO OUR ONGOING COMMITMENT TO QUALITY, FEATURES, FINISHES, FLOOR PLANS, INFORMATION, AND SPECIFICATIONS ARE SUBJECT TO CHANGE WITHOUT NOTICE.

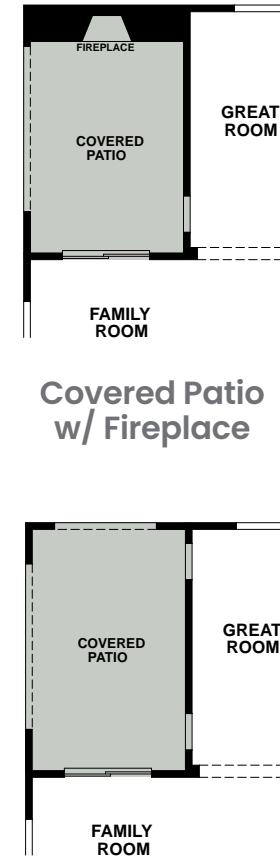
# RESIDENCE 5



FIRST FLOOR



SECOND FLOOR



Covered Patio  
w/ Fireplace

Covered Patio

OPTIONS



# FEATURES

## INCLUDED

### KITCHEN

- GE appliance package with 30" range, microwave and dishwasher in stainless
- Slab granite countertops with 6" splash with full height at range in three color choices
- Delta "Leland" pull down kitchen faucet
- Birch cabinets in your choice of six colors with brush nickel pulls
- Amerisink stainless steel kitchen sink

### BATHS

- Birch cabinets in your choice of six colors with brush nickel pulls
- Estone in glacier white with 4" splash with a rectangle undermount bowl sink

- Glacier white Estone surrounds at all showers and baths
- Elongated toilets in the master, powder and secondary baths
- Delta "Classic" plumbing fixtures in chrome

### INTERIORS

- 18" x 18" ceramic tile at entry, kitchen and nook
- 12" x 12" ceramic tile at all baths and laundry
- 3 ¼" base molding with eased edge
- Cat5 phone wiring to bedrooms and kitchen
- RG6 wiring to family room and bedrooms
- Ceiling lights in all bedrooms
- Paint grade handrail
- 8' interior doors

### EXTERIORS

- Concrete roof tile per elevation
- Exterior wall mounted fixtures in antique bronze
- Clopay garage doors with opener

### SMART HOME FEATURES

- LED recessed can lights
- Interior low-VOC paint
- Tankless water heater
- Carrier Smart thermostat
- Dual zoned air conditioning
- SmartVent

## AVAILABLE OPTIONS

### APPLIANCES

- Upgraded appliances packages
- Refrigerator options
- Washer and dryers

### CABINETRY

- Rich finish door style and hardware selections
- Built-in cabinetry

### COUNTERTOPS

- Selections of natural granite slab or quartz countertops at kitchen with decorative edge choices
- Natural stone or quartz available at bath and laundry

### FINISH TRIM

- Optional gas fireplace at great room
- Upgraded 5 ¼" base board
- Interior two-tone paint upgraded colors
- Closet organizers
- Framed mirror sections at all bathrooms

### PLUMBING

- Selection of Delta kitchen faucets
- Selections of Delta plumbing fixture packages

### ELECTRICAL

- Security, audio and home automation systems
- Upgraded lighting packages available
- Ceiling fans
- Solar system, size per plan

# SITE MAP | ALLENDALE



THIS SITE PLAN IS NOT INTENDED AS A LEGAL DESCRIPTION. THE DEPICTION OF THE PROPERTY BOUNDARIES AND BUILDING LOCATIONS IS MEANT TO SERVE ONLY AS A GENERAL GUIDE. THE ACTUAL BOUNDARIES AND BUILDING LOCATIONS WILL DIFFER TO SOME EXTENT FROM THE ABOVE DEPICTION. ASK SALES REPRESENTATIVE FOR DETAILS.

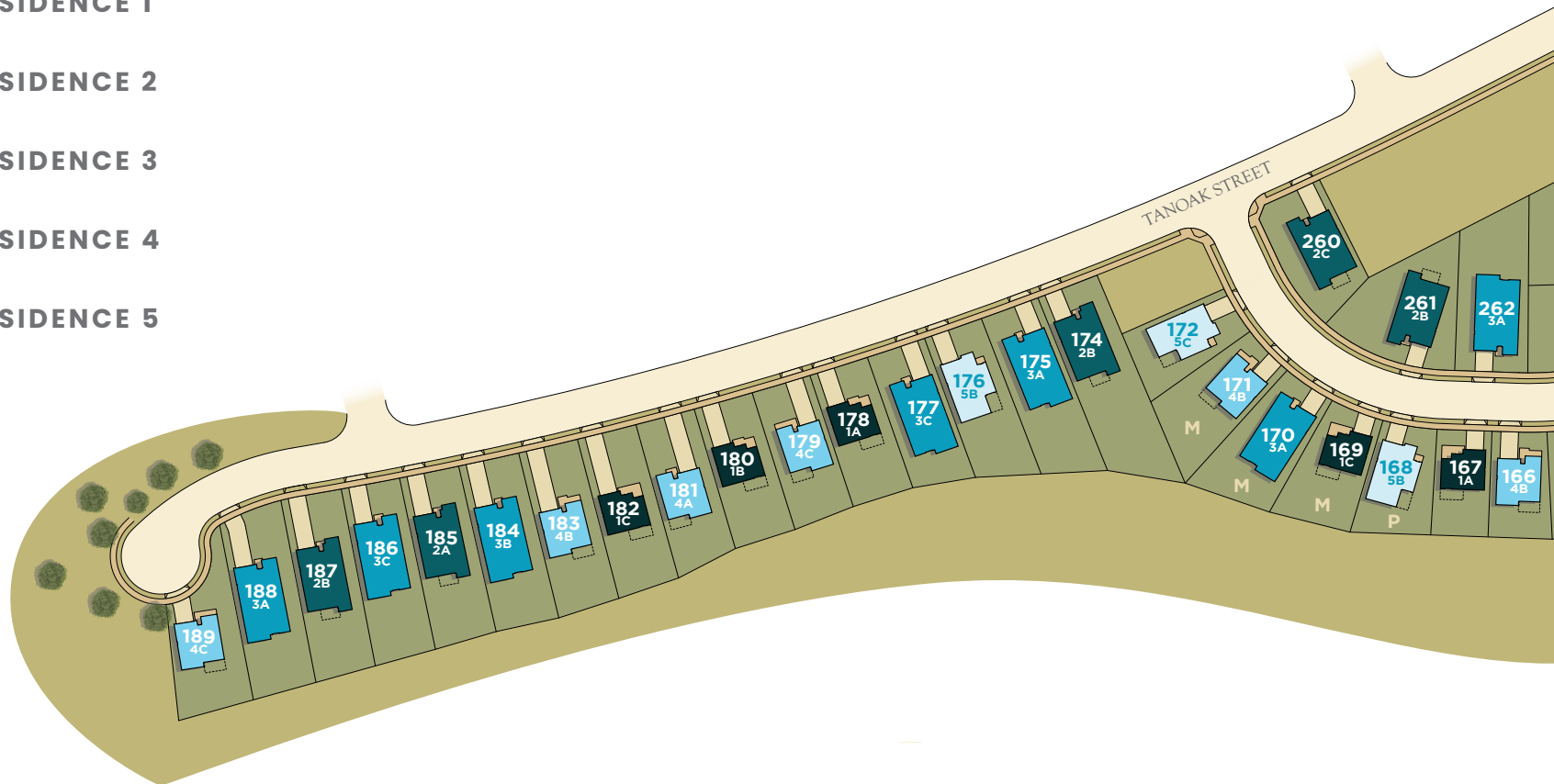


# SITE MAP | THE KNOLLS



## THE KNOLLS AT ALLENDALE

-  RESIDENCE 1
-  RESIDENCE 2
-  RESIDENCE 3
-  RESIDENCE 4
-  RESIDENCE 5



THIS SITE PLAN IS NOT INTENDED AS A LEGAL DESCRIPTION. THE DEPICTION OF THE PROPERTY BOUNDARIES AND BUILDING LOCATIONS IS MEANT TO SERVE ONLY AS A GENERAL GUIDE. THE ACTUAL BOUNDARIES AND BUILDING LOCATIONS WILL DIFFER TO SOME EXTENT FROM THE ABOVE DEPICTION. ASK SALES REPRESENTATIVE FOR DETAILS.

# SITE MAP | THE KNOLLS












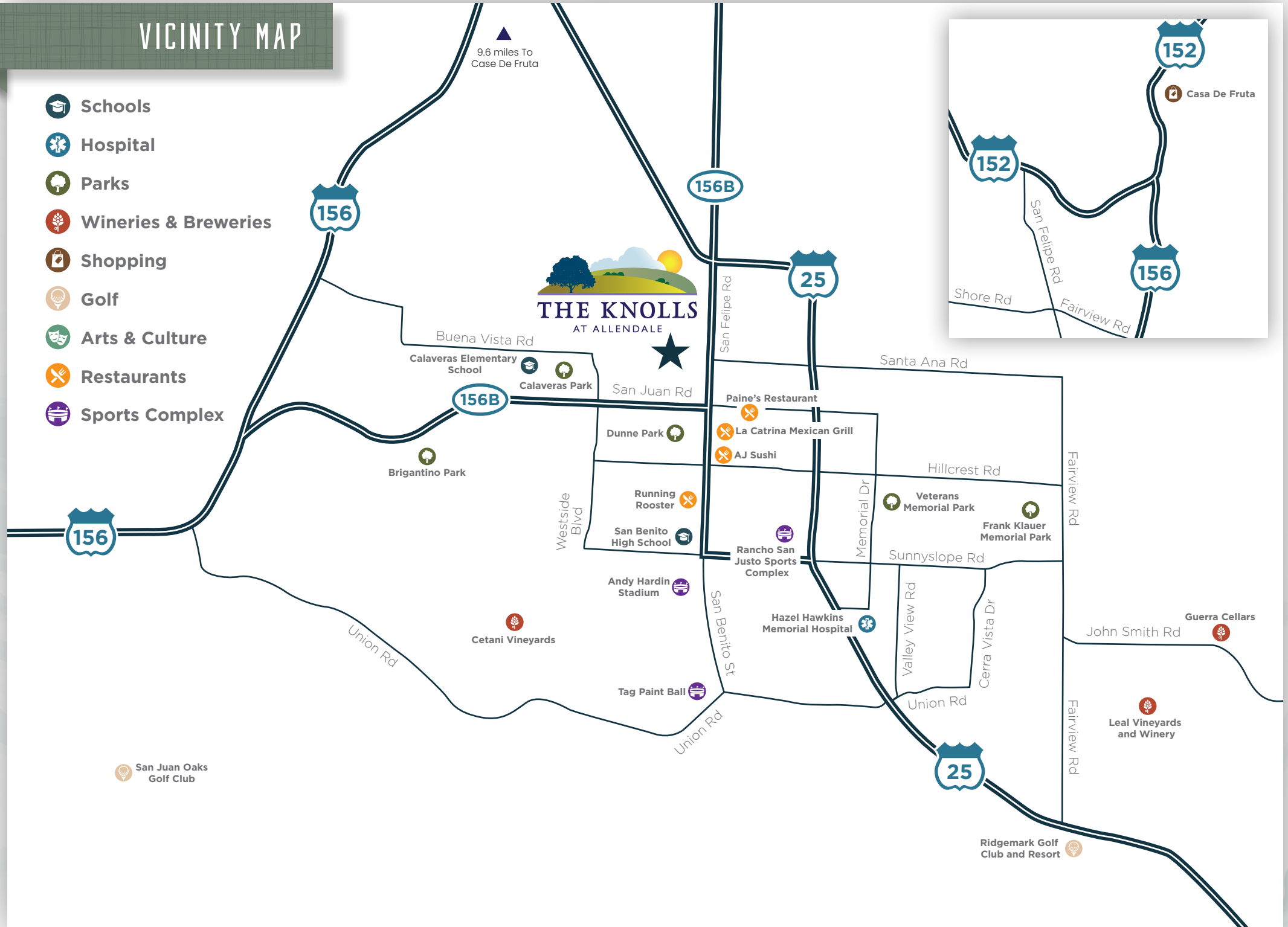
- RESIDENCE 1
- RESIDENCE 2
- RESIDENCE 3
- RESIDENCE 4
- RESIDENCE 5

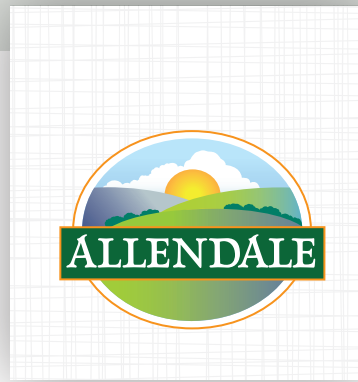
THIS SITE PLAN IS NOT INTENDED AS A LEGAL DESCRIPTION. THE DEPICTION OF THE PROPERTY BOUNDARIES AND BUILDING LOCATIONS IS MEANT TO SERVE ONLY AS A GENERAL GUIDE. THE ACTUAL BOUNDARIES AND BUILDING LOCATIONS WILL DIFFER TO SOME EXTENT FROM THE ABOVE DEPICTION. ASK SALES REPRESENTATIVE FOR DETAILS.



# VICINITY MAP

-  Schools
-  Hospital
-  Parks
-  Wineries & Breweries
-  Shopping
-  Golf
-  Arts & Culture
-  Restaurants
-  Sports Complex





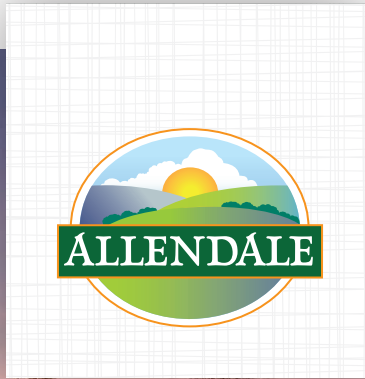
## THE DENOVA HOMES STORY

For 30 years, DeNova Homes has earned a reputation as one of the most respected homebuilders in California. Our approach is simple—as a private, family-owned builder, we address each community individually, incorporate the unique characteristics of the surrounding area and commit to build only the very best. These guiding principles have been recognized numerous times by the Building Industry Association through various awards, including the prestigious Builder of the Year award. Perhaps most rewarding of all though are the hundreds of satisfied homeowners who have confirmed DeNova Homes' standard of quality, lifestyle, and value.

While we focus on innovative design and superior craftsmanship, our primary commitment is to the lifestyle our homeowners enjoy when they move into a DeNova home. Building community is what we do, whether it is creating the ultimate environment for your dream lifestyle, building homeless shelters with HomeAid Northern California, or supporting the American Red Cross, Volunteers of America, the American Cancer Society, and many other local organizations. DeNova Homes is there for the neighborhoods in which we build. It is our defining goal. It is what makes us proud. It's what creates *Home*.







Welcome Center • 4 San Benito Street • Hollister • CA • 95023  
(831) 226-1300 • [TheKnolls@DeNovaHomes.com](mailto:TheKnolls@DeNovaHomes.com) • [DeNovaHomes.com](http://DeNovaHomes.com)

